

ALLIANCE WOMEN MINISTRIES

HANDBOOK

This revision of the 1994 Handbook has been prepared under the direction of the National Executive Committee of Alliance Women Ministries, National Church Ministries of The Christian and Missionary Alliance.

Handbook Revision Committee, 2002

Susan Bernard, Chairperson

Billie Jo Medin

Ladonna Peterson

Becky Zuch, National President, Alliance Women Ministries

This publication is designed mainly as a guide for local Alliance Women's groups. It will show our heritage, structure, objectives and procedures. Ideas to implement these are found in the Yearbook, the annual leader's guide for Alliance Women Ministries, which is sent to each local church.

CONTENTS

Purpose	pg. 2
Heritage	pg. 3
Objectives	pg. 5
Organizational Chart.....	pg. 6
I. Constitutions	pg. 7
A. National.....	pg. 8
B. District	pg. 11
C. Area	pg. 14
D. Local.....	pg. 18
II. Guidelines.....	pg. 22
A. Starting a Women’s Ministry.....	pg. 23
B. Introduce a Local Church to Alliance Women Ministries	pg. 24
C. Elections	pg. 25
D. Bylaws	pg. 26
E. Training Local Leadership – Worships/Seminars	pg. 27
III. Job Descriptions	pg. 28
District	pg. 29
Area	pg. 30
Local.....	pg. 31
Yearly Evaluation Checklist	pg. 33

Alliance Women Ministries

Alliance Women Ministries is an auxiliary of The Christian and Missionary Alliance organized to promote fellowship, outreach and prayer among the women and encourage support and prayer for Alliance missionaries and worldwide ministries.

As Alliance Women, we agree with our founder, Dr. Albert B. Simpson, that we are "...to keep abreast of the progress of our age and be...women of today in our message and ministry to our own generation."

This handbook is written to provide the leaders of our women's ministries with materials and directives to assist in the formation and continuation of our four objectives.

Because the church exists to help people everywhere find and know Jesus Christ as Lord and Savior, we expect that women's ministries will be a functioning part of the local church in carrying out Christ's Great Commission.

It is our goal to involve every woman attending an Alliance church in the ministries of Alliance Women.

ALLIANCE WOMEN: OUR HERITAGE

The Christian and Missionary Alliance has always had women of prayer, women of spiritual maturity, and women of many abilities in its fellowship.

Not until 1914, however, did a group of Alliance women unite for a common purpose, and that was the beginning of the “prayer bands” which became the basis for the missionary prayer fellowships. During the Alliance General Council in Chicago that year, three women of spiritual dedication asked the other ladies in attendance to come together to pray for world missions. Those three were Mrs. Paul Rader and Misses Cora and Ella Rudy.

The unity of that early session received little notice at the time, but it was a demonstration of effective cooperation in prayer. From that beginning, many similar groups began to meet in local Alliance churches.

By 1923, the Alliance headquarters recognized the significance of praying bands of women in the constituency, publishing the first “Prayer Bulletin.”

In 1929, the Alliance Board of Managers voted to encourage formation of women’s prayer groups in the interest of the society’s spiritual responsibility for millions of people around the world. By 1936, a total of 324 organized groups were meeting for prayer and providing help for missionaries. It was soon apparent that the best equipped missionaries going overseas were those who came from districts where there were many prayer groups.

There was still no totally organized approach to the untapped potential in Alliance women. This lack of united effort became a concern of Georgia Derk, a pastor’s wife and former missionary. She felt the inward challenge to test new ideas in her own church in Albany, New York, as well as in other churches in the district.

Mrs. Derk was instrumental in the forming of the first “area” group of Alliance women in 1947, agreeing then to serve as the first president of the fledgling sectional organization.

As the cooperative fellowship concept spread throughout the Northeastern District, Mrs. Derk was called upon frequently to report in other areas. The groundwork was laid so that in July 1949, at Delta Lake Camp, the first district-wide organization came into being. This was called Ladies United Missionary Organization (LUMO), with Mrs. Derk serving as president.

District organizations began to increase in number and effectiveness, bringing about the formation of the National Committee in 1961 at the General Council in Columbus, Ohio. At this time the name Women’s Missionary Prayer Fellowship (WMPPF) was adopted.

The National Committee's task was the coordination of all of the prayer and fellowship activities of women's groups throughout the Alliance constituency in North America. Mrs. S.J. Farinel was appointed to serve as the first committee chairman. In 1965, Mrs. C.J. Mason was selected the first national president.

Now, the National Executive Committee coordinates prayer support and material aid for every Alliance missionary. District and area organizations provide the link between local groups and the National Executive Committee.

Since 1966, one major missionary project has been selected each year, calling for joint participation by all Alliance women throughout North America.

In January 1981, when the Alliance in Canada became autonomous, the women in the United States and in Canada formed separate organizations, each choosing its own annual project.

By 1987, the Centennial celebration of The Christian and Missionary Alliance, the women had given over three million dollars to the annual project.

In 1993 the new name, Alliance Women in Missions and Prayer, became effective and a purpose statement was adopted.

In 2002, In keeping with the desire to be relevant to the current generation of Alliance women and yet remain faithful to the purpose of four objectives with fellowship, outreach, missions and prayer, the name Alliance Women Ministries was selected.

OBJECTIVES

Fellowship

To promote the building of relationships, studying of God's Word, and discipling of others.

Outreach

To promote opportunities that will influence the lives of friends and neighbors by sharing God's love.

Missions

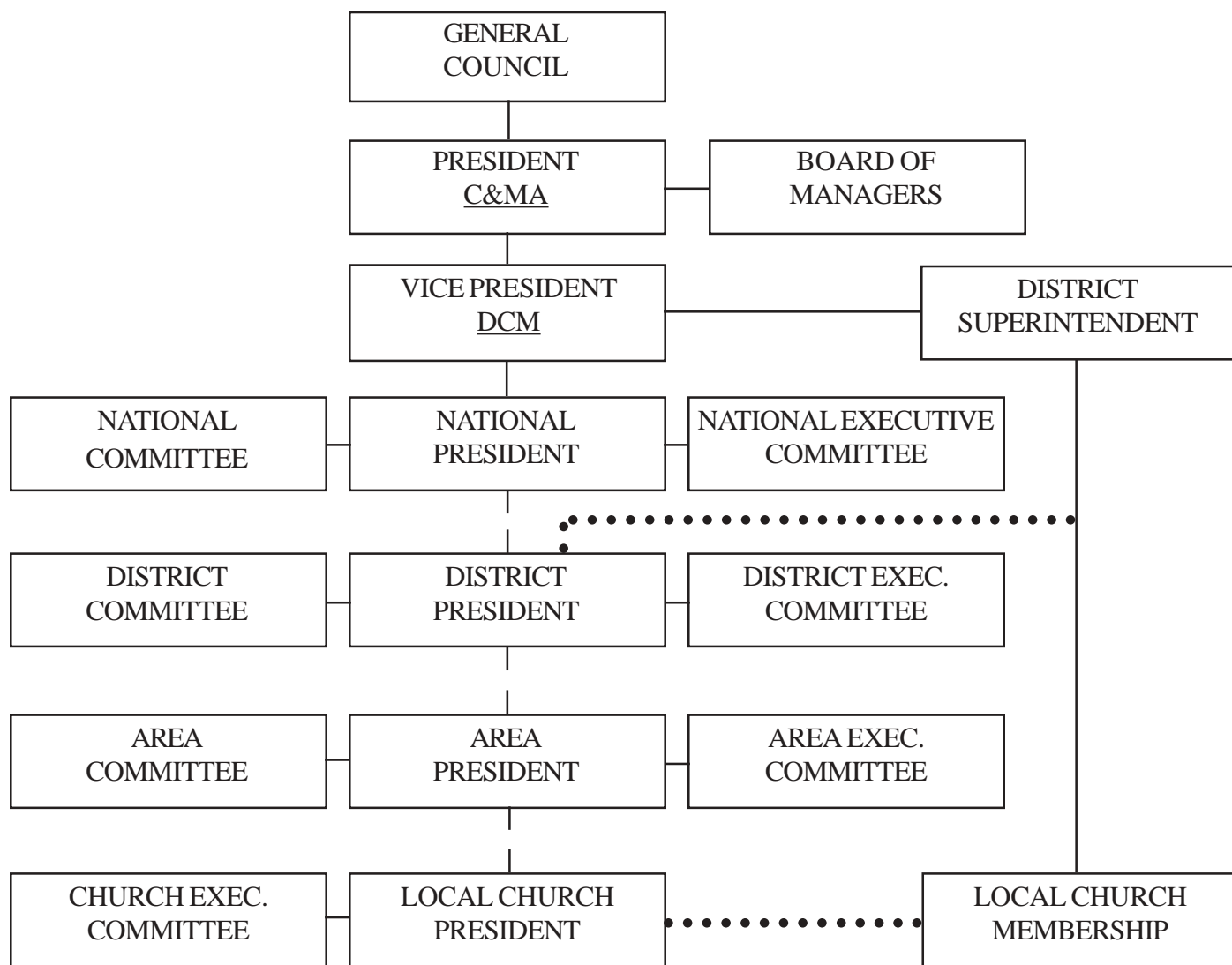
To promote a knowledge and support of the worldwide ministries of The Christian and Missionary Alliance.

MINISTRIES

Prayer

To promote corporate prayer for local, national and worldwide ministries and needs.

ALLIANCE WOMEN MINISTRIES ORGANIZATIONAL CHART



1. Solid vertical lines indicate lines of authority.
2. Solid horizontal lines indicate representation on behalf of committees/board.
3. Dotted vertical lines indicate relationship without authority.
4. Heavy dotted lines indicate direct authority.
5. The Local Church Membership elects its Alliance Women President.
This function is indicated by the heavy dotted line.